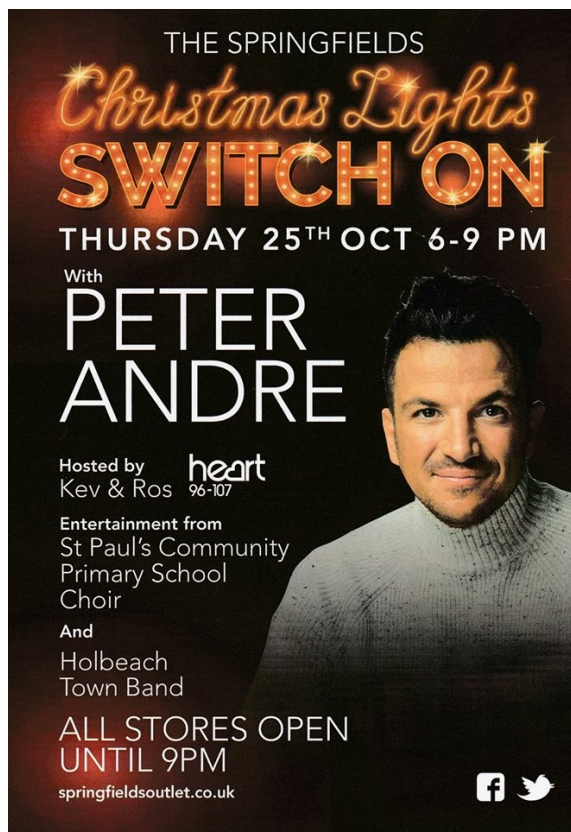


HOLBEACH TOWN BAND NEWSLETTER - OCTOBER 2018

OCTOBER EVENTS

25th October - Springfields

We played at Springfields Shopping Outlet on this Thursday evening before the Christmas lights were switched on by Peter Andre.



It's great to be named on the Poster!

According to the Press there were 6,000 people there, so that must be one of our best ever audiences.

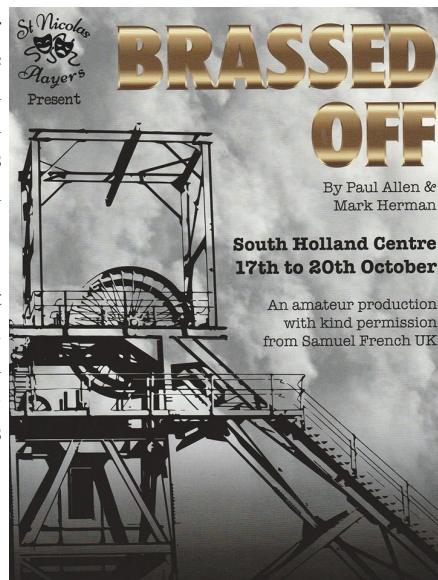
We shared a gazebo behind the stage with the St Paul's School Choir - there was not a lot of room! So many of us set up outside the gazebo; there were no lights outside so it got interesting trying to pack up at the end.

Getting on the stage was fun. We were short on front row cornets (again) and had no percussion but that's as well, because the stage was very small. We squeezed 25 on the stage but there wasn't room to take photos. Springfields provided us with a few chairs but most of the band had to stand.

17 - 20th October - Brassed Off

Well done to the 6 of our members (and to the other players) who helped form the Grimley Band for St Nicolas Players performance of Brassed Off.

The band have spent weeks rehearsing and generally played to a good standard. Hannah's playing of 'Orange Juice' was a high-light.



WELCOME

Welcome to James Biggs who has joined us to play drums.

BINGO

The next bingo is on Friday 9th November. The bingo sessions raise welcome funds to help with the band's overheads. All sections of the band benefit. Help is needed to set up at 6.30, sell tickets at 7.00, serve refreshments at 8.15, and pack away at 9.30. Please help if you can.

Advance notice: the December Bingo will be on 7th December, being the first Friday in December due to a clash with band engagements. We will play carols during the half-time break.

COMING UP

11th November - Remembrance Sunday

We have two events this year - the usual in the afternoon at Holbeach St Marks, and also in the morning at Moulton Seas End.

At Moulton Seas End we will play a couple of pieces at the War Memorial then go into the village hall and play one or two more. As we understand it, we will not be required to play Last Post.



In the afternoon we are back at Holbeach St Marks where we will play at the War Memorial then go into church and play for the service. We will play Last Post twice as usual.

Christmas:

We have Concerts at Tydd St Mary Church and at Fulney Church. Also at a Music Café at the W.I. Hall, Holbeach

We will be playing carols every Saturday morning in December as well as on Christmas eve and some afternoons.

We have been asked to play carols in Crowland Abbey on the afternoon of 1st December and in Spalding Town Centre on the afternoon of 8th December

We may still be invited to play at Holbeach Christmas Fayre (probably on 1st December) and play Carols around the Tree in the week before Christmas.

Note: We do not need a full band for carol playing. We would hope to put together a balanced group for each event. Please let us know if you could be available for each one and we will select the groups.

IMPORTANT

Collectors needed:

All the carol playing jobs need collectors. Ideally we need 4 to 6 collectors each time. Traditionally family members and friends collect for us as well as members of the learner/training bands. If you are not required for playing, you could collect!

Christmas Cards:

As in previous years, we suggest NOT giving Christmas Cards to other band members. Instead, you may wish to make a donation to the band of some of the money you save.

Learner/Starter Groups:

Early warning - there will be no Saturday morning starter/learner groups in December as the band will be busy!

Music:

Thanks to the librarian and her helpers who spent an afternoon in the bandroom sorting out the black folders.

EVENTS LIST

Date	Event
Sunday 11 th November a.m.	Remembrance Service at Moulton Seas End
Sunday 11 th November p.m.	Remembrance Service at Holbeach St Marks
Friday 30 th November	Christmas Concert at St Mary's Church, Tydd St Mary
Saturday 1st December a.m.	Carols at Sainsbury's, Spalding
Saturday 1st December p.m.	Carols at Crowland Abbey
Friday 7th December	Carols at Band's fund-raising bingo
Saturday 8th December a.m.	Carols at Springfields, Spalding
Saturday 8th December p.m.	Carols at Spalding Town Centre for switching on Christmas lights
Sunday 9th December	Christmas Music Café at WI Hall, Holbeach
Friday 14th December	Christmas Concert at St Paul's Church, Fulney
Saturday 15th December	Carols at Tesco's Holbeach
Saturday 22nd December	Carols at Café Aurora, Holbeach
Monday 24th December	Carols at Tesco's Holbeach

OFFICERS

Musical Director	Mel Hopkin	01775 712420	mel@mhopkin.co.uk
Chairman	Stephanie Palmer	01406 425227	stephaniepalmer@tesco.net
Secretary	Bev Davey	01775 720192	bevsl Davey@gmail.com
Treasurer	Diane Parker	01406 330451	dianefleurcottage@hotmail.com
Band Manager	Neil Simons	07763 474526	neil@blott.org